

Wall Mounted Scene or Switch Panel

Model No.: PK8, PK4

Push button/2-8 Scene/2-8 Zone dimming/Dual color LED key/AC input/RF 2.4G and DMX 512 signal output



PK8



PK4

CE RoHS LVD RED

PK8, PK4 is designed for scene control, with 8/6/4/2 scene memories selectable, and each scene is programmed by 8 zone and 8 scene RF remote RS10.

Features

- 8/4 key panel RF 2.4G remote with scene recall or zone dimming function, selectable by DIP switch.
- Each zone can remote control one or multiple RF 2.4G 1-5 colors LED controllers.
- Can also be used as 8/4/2 zone dimming DMX512 master.
- DMX signal output comply to standard DMX512 protocol, compatible with DMX decoder from any supplier.
- Each push button with blue and red dual color LED indicator.
- White & Black & Golden color panel available.

Technical Parameters

Input and Output	
Input voltage	100-240VAC
Input current	Max 0.1A
Output signal	RF 2.4GHz, DMX512

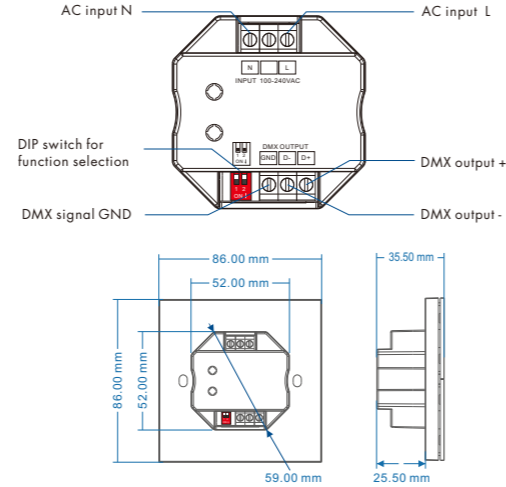
Dimming data	
Input signal	Push button + RF 2.4GHz
RF Control distance	10m(Barrierfree space)
Dimming level	256 levels
Dimming range	0-100%

Warranty	
Warranty	5 years

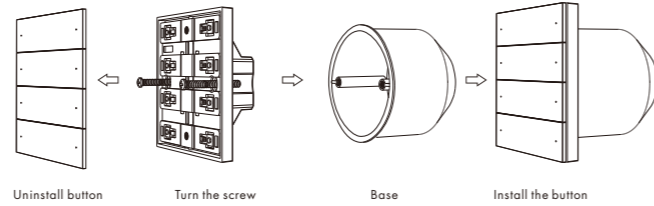
Safety and EMC	
EMC standard [EMC]	ETSI EN 301 489-1 V2.2.3 ETSI EN 301 489-17 V3.2.4
Safety standard [LVD]	EN 62368-1:2020+A1 1:2020
Radio Equipment [RED]	ETSI EN 300 328 V2.2.2
Certification	CE, EMC, LVD, RED

Environment	
Operation temperature	Ta: -30°C ~ +55°C
Case temperature (Max.)	Tc: +65°C
IP rating	IP20

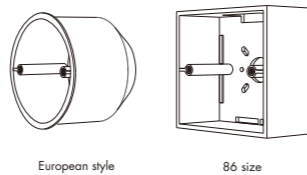
Mechanical Structures and Installations



Installation diagram:

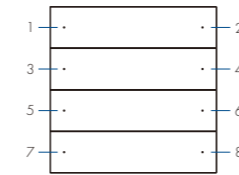


Typical base as below:



Key function

PK8 Scene & Switch Panel



8 Scene

- 1: Scene 1 2: Scene 2 3: Scene 3 4: Scene 4
- 5: Scene 5 6: Scene 6 7: Scene 7 8: Scene 8
- 1-8 Short press: Recall scene 1-8.
- 1-8 Long press(2s): Turn off this scene when it is on.

ON, OFF, 6 Scene

- 1: ON 2: OFF 3: Scene 1 4: Scene 2
- 5: Scene 3 6: Scene 4 7: Scene 5 8: Scene 6
- 1 Short press: Turn on the scene light.
- 1 Long press(1-6s): Dimming up when light is on.
- 2 Short press: Turn off the scene light.
- 2 Long press(1-6s): Dimming down when light is on.
- 3-8 Short press: Recall scene 1-6.

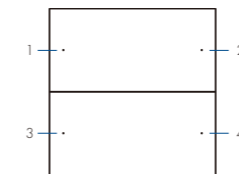
8 Zone ON/OFF

- 1: Zone 1 on/off 2: Zone 2 on/off 3: Zone 3 on/off 4: Zone 4 on/off
- 5: Zone 5 on/off 6: Zone 6 on/off 7: Zone 7 on/off 8: Zone 8 on/off
- 1-8 Short press: Turn on or off the light of each zone.
- 1-8 Long press(1-6s): Dimming up or down when light is on.

4 Zone ON, OFF

- 1: Zone 1 on 2: Zone 1 off 3: Zone 2 on 4: Zone 2 off
- 5: Zone 3 on 6: Zone 3 off 7: Zone 4 on 8: Zone 3 off
- 1, 3, 5, 7 Short press: Turn on the light of each zone.
- 1, 3, 5, 7 Long press(1-6s): Dimming up when light is on.
- 2, 4, 6, 8 Short press: Turn off the light of each zone.
- 2, 4, 6, 8 Long press(1-6s): Dimming down when light is on.

PK4 Scene & Switch Panel



4 Scene

- 1: Scene 1 2: Scene 2
- 3: Scene 3 4: Scene 4
- 1-4 Short press: Recall scene 1-4.
- 1-4 Long press(2s): Turn off this scene when it is on.

ON, OFF, 2 Scene

- 1: ON 2: OFF
- 3: Scene 1 4: Scene 2
- 1 Short press: Turn on the light.
- 1 Long press(1-6s): Dimming up when light is on.
- 2 Short press: Turn off the light.
- 2 Long press(1-6s): Dimming down when light is on.
- 3, 4 Short press: Recall scene 1-2.

4 Zone ON/OFF

- 1: Zone 1 on/off 2: Zone 2 on/off
- 3: Zone 3 on/off 4: Zone 4 on/off
- 1-4 Short press: Turn on or off the light of each zone.
- 1-4 Long press(1-6s): Dimming up or down when light is on.

2 Zone ON, OFF

- 1: Zone 1 on 2: Zone 2 off
- 3: Zone 1 on 4: Zone 2 off
- 1, 3 Short press: Turn on the light of each zone.
- 1, 3 Long press(1-6s): Dimming up when light is on.
- 2, 4 Short press: Turn off the light of each zone.
- 2, 4 Long press(1-6s): Dimming down when light is on.

Scene programming

When the panel set as 8/6/4/2 scene function, each scene must be programmed by RS10 remote firstly, then use panel scene button to recall these scene.

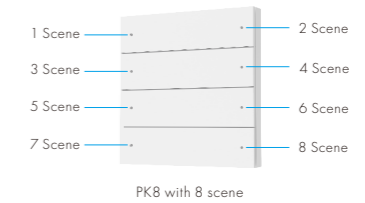
Step1: one or multiple light zone are matched with the RS10 remote.

Step2: use RS10 remote to change the color, brightness or on/off state of the light zone, and save the current state to 1-8 scene.

Step3: one or multiple light zone are matched with the PK8 panel remote.

Step4: use panel scene button to recall these scene which programmed by RS10 remote.

The scene number of the scene panel corresponds to the scene number of the RS10 remote.



PK8 with 8 scene



RS10 remote

1-8 Scene

Panel work as RF remote

When the panel work as RF remote, it need match with other RF 2.4G 1-5 colors LED controllers.
End user can choose the suitable match/delete ways. Two options are offered for selection:

Use the controller's Match key

Match:
Short press match key, immediately press Scene or ON/OFF key of the panel.
The LED indicator fast flash a few times means match is successful.

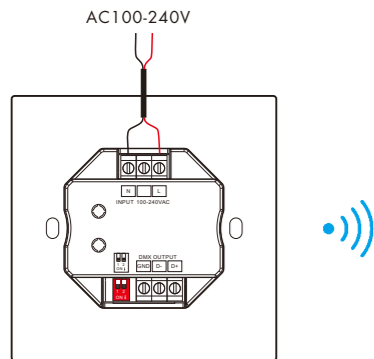
Delete:
Press and hold match key for 5s to delete all match,
The LED indicator fast flash a few times means all matched remotes were deleted.

Use Power Restart

Match:
Switch off the power of the receiver, then switch on power, repeat again.
Immediately short press Scene or ON/OFF key 3 times on the panel.
The light blinks 3 times means match is successful.

Delete:
Switch off the power of the receiver, then switch on power, repeat again.
Immediately short press Scene or ON/OFF key 5 times on the panel.
The light blinks 5 times means all matched remotes were deleted.

Wiring diagram for panel work as RF remote



Recommended RF LED controller and driver

Light type	Output type	Model	Product name	Product picture
DIM	Constant voltage	V1	Single Color LED Controller (5-36W, 8A)	
		V1-L	Single Color LED Controller (12-48V, 15A)	
		V1-H/P	Single Color LED Controller (12-24V, 8A)	
	Constant current	PF-10A-L	RF Constant Current LED Driver (10W, 100-450mA)	
		PF-12A-L	RF Constant Current LED Driver (12W, 100-450mA)	
		PB-12A-L	RF Constant Current LED Driver (12W, 100-450mA)	
CCT	Constant voltage	V2	Dual Color LED Controller (12-24V, 5A/CH)	
		V2-L	Dual Color LED Controller (12-48V, 8A/CH)	
	Constant current	PF-12A-2	RF Constant Current LED CCT Driver (12W, 150-500mA)	
		PF-20A-2	RF Constant Current LED CCT Driver (20W, 300-1050mA)	
		CXR-21A-2(WB)	Bluetooth & RF 2CH Constant Current LED Driver (21W, 150-500mA)	
		CXR-21A-2(WT)	WiFi & RF 2CH Constant Current LED Driver (21W, 150-500mA)	
RGB/RGBW	Constant voltage	V3	3 Channel LED RF Controller (12-24V, 4A/CH)	
		V3-L	3 Channel LED RF Controller (12-48V, 6A/CH)	
		VP	4 Channel LED RF Controller (12-24V, 4A/CH)	
		V4	4 Channel LED RF Controller (12-48V, 5A/CH)	
	Constant current	C4	4 Channel LED RF Controller (12-48V, 350-1200mA)	
		Constant voltage	V5-M	5 Channel LED RF Controller (12-24V, 3A/CH)
V5-L	5 Channel LED RF Controller (12-48V, 5A/CH)			

Panel work as DMX512 Master

When the panel set as 8/4/2 zone dimming function, it can also be work as DMX512 master.
After connect with DMX decoders, please set the DMX decoders address as below:

DMX decoder's address 001 is controlled by Zone 1,
DMX decoder's address 002 is controlled by Zone 2,
DMX decoder's address 003 is controlled by Zone 3,
DMX decoder's address 004 is controlled by Zone 4,
DMX decoder's address 005 is controlled by Zone 5,
DMX decoder's address 006 is controlled by Zone 6,
DMX decoder's address 007 is controlled by Zone 7,
DMX decoder's address 008 is controlled by Zone 8.

Wiring diagram for panel work as DMX512 master

